

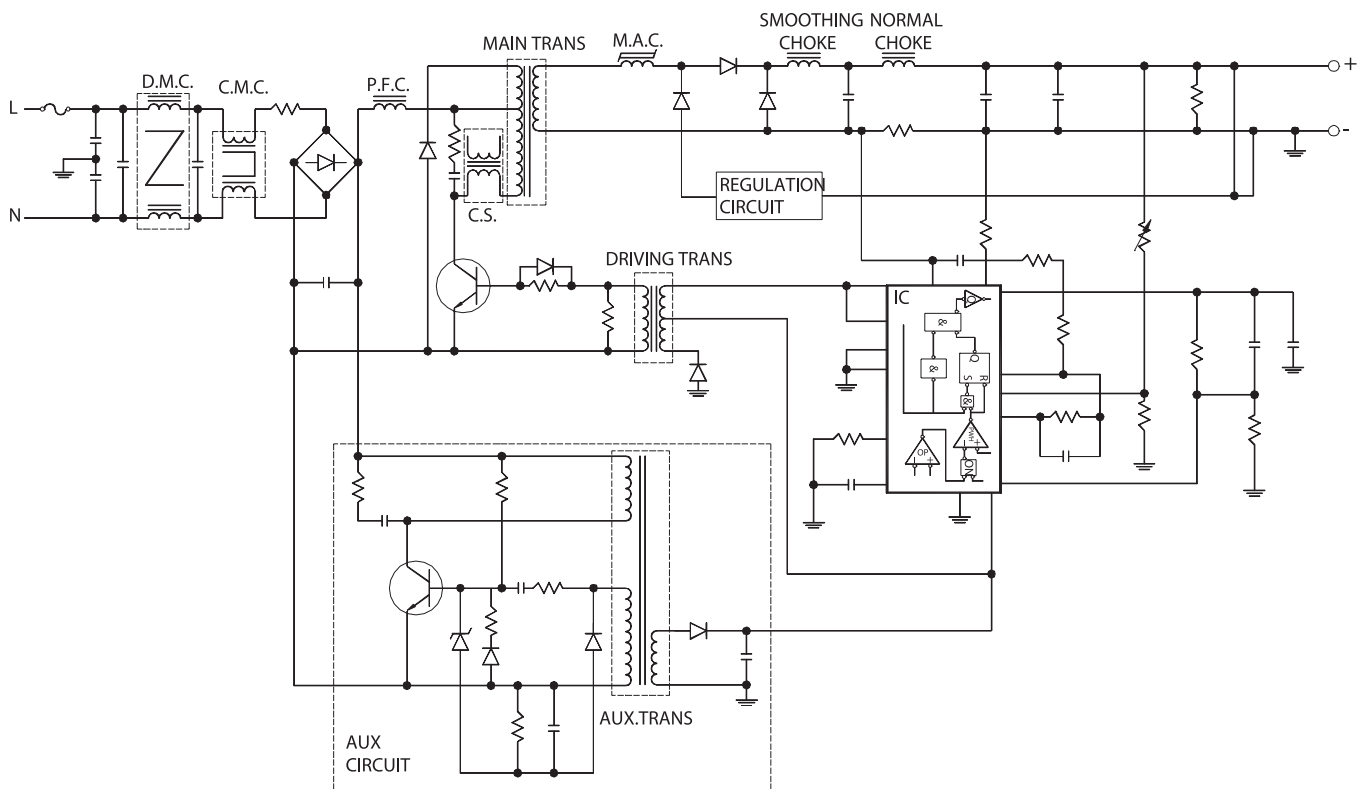
Power Transformers

OFF-LINE Switch Mode



ELYTONE HIGH PERFORMANCE MAGNETICS FOR S.M.P.S

Typical converter circuit-forward topology



- D.M.C. ----- Differential Mode Choke
- C.M.C. ----- Common Mode Choke
- P.F.C. ----- Power Factor Correction Choke
- M.A.C. ----- MAG AMP Choke
- C.S. ----- Current Sense Transformer