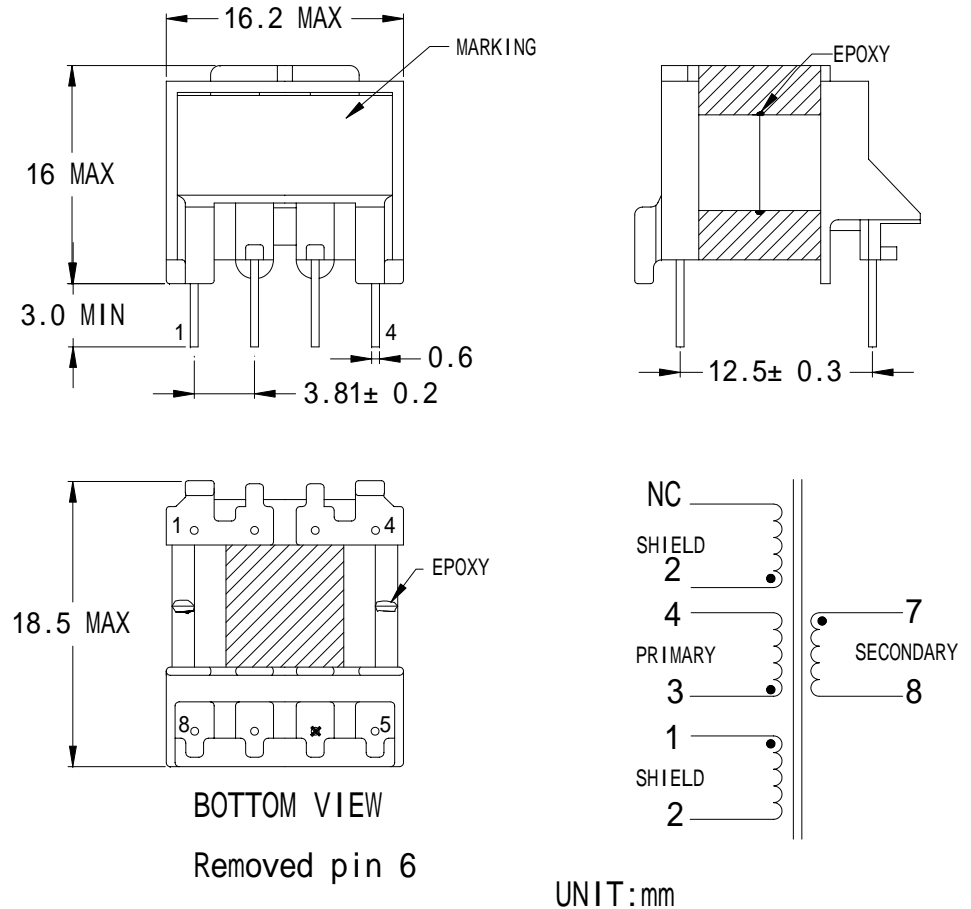


# ELYTONE ELECTRONIC CO.,LTD.

Testing Item	Specification
General Electrical Specifications at :	25
Operating Temperature :	-20 ~-80
Primary Voltage Range :	85VAC~265VAC
Secondary Voltage Range :	6.0VDC
Output Power Range :	2.4W
Core Type :	EE13
Inductance : @ 100 KHz , 0.1 Vrms	1.31mH~1.60mH (3-4 at other windings open)
D.C Resistance :	4.20 max. (3-4)
	160 m max. (1-2)
	50 m max. (7-8)
Leakage Inductance : @ 100 KHz , 0.1 Vrms	50.0 $\mu$ H max. (3-4 with 7,8 Shorted )
Self Resonance Frequency :	300 KHz min. (3-4 at other windings open)
Hi-Pot Test :	3000 VAC 60 Hz 1 minute. form pins 1~4 to Pins 7~8
Safety	<ol style="list-style-type: none"> <li>1. Designed for Use with Power Integrations IC's, TinkSwitch TNY264P</li> <li>2. Designed to comply with the requirements of IEC950,EN60950, UL1950/CAS950 and AS/NZS3260 supplementary insulation with 300V working voltage.</li> <li>3. Designed to comply with the requirements of UL,IEC &amp; CSA Insulation System Class B.</li> <li>4. Comply with the requirements of EU RoHS Directive.</li> </ol>



Part NO. : ETDER003

Rev. : A

Sample No. : YTB-17578