

ET-564 SERIES



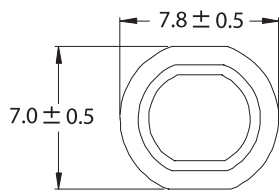
SMD Power Inductors

ET - 564 SERIES

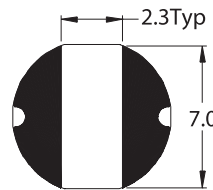
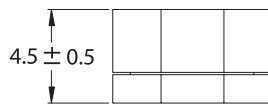


- Magnetically shielded
- Large foot print design for excellent soldering
- Low cost for wide application
- Custom versions available upon request
- Tape & Reel package

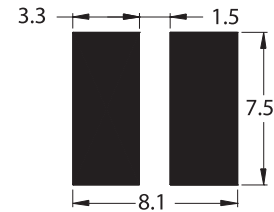
Mechanical Dimensions:



(TOP VIEW)



(BOTTOM VIEW)



RECOMMENDED PCB LAYOUT

UNIT:mm

Part Number	Inductance ¹ (μ H \pm 20%)	DCR (Ω max.)	Isat ² (Adc)
ET - 564 - 100	10	0.07	1.65
ET - 564 - 120	12	0.08	1.57
ET - 564 - 150	15	0.09	1.39
ET - 564 - 180	18	0.10	1.29
ET - 564 - 220	22	0.13	1.12
ET - 564 - 270	27	0.16	1.06
ET - 564 - 330	33	0.18	0.97
ET - 564 - 390	39	0.23	0.91
ET - 564 - 470	47	0.27	0.80
ET - 564 - 560	56	0.29	0.76
ET - 564 - 680	68	0.33	0.68
ET - 564 - 820	82	0.43	0.62
ET - 564 - 101	100	0.49	0.55
ET - 564 - 121	120	0.68	0.49
ET - 564 - 151	150	0.94	0.44
ET - 564 - 181	180	1.00	0.40
ET - 564 - 221	220	1.18	0.36
ET - 564 - 271	270	1.30	0.33

1. Inductance tested at 100kHz, 0.1Vrms, 0Adc.
2. Inductance drop = 20% typ. at rated Isat.
3. Δ T = 45°C rise typ.
4. Operating temperature range -40°C to + 85°C.
5. Electrical specifications at 25°C.