

# ET-553 SERIES

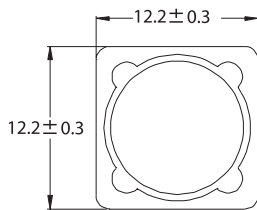


## SMD Power Inductors

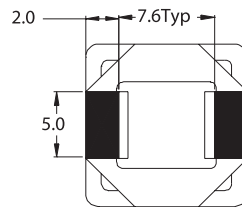
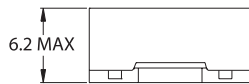


- Magnetically shielded
- Very high current—up to 8 Adc saturation current
- Very low DCR
- Low cost for wide application
- Custom versions available upon request
- Tape & Reel package

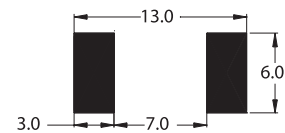
### Mechanical Dimensions:



(TOP VIEW)



(BOTTOM VIEW)



RECOMMENDED PCB LAYOUT

UNIT:mm

Part Number	Inductance <sup>1</sup> (μH)	DCR (Ω max.)	Isat <sup>2</sup> (Adc)
ET - 553 - 1R3	1.3	0.012	8.0
ET - 553 - 2R1	2.1	0.014	7.0
ET - 553 - 3R1	3.1	0.017	6.0
ET - 553 - 4R4	4.4	0.020	5.0
ET - 553 - 5R8	5.8	0.021	4.4
ET - 553 - 7R5	7.5	0.024	4.2
ET - 553 - 100	10	0.029	4.0
ET - 553 - 120	12	0.031	3.5
ET - 553 - 150	15	0.034	3.3
ET - 553 - 180	18	0.039	3.0
ET - 553 - 220	22	0.051	2.8
ET - 553 - 270	27	0.057	2.3
ET - 553 - 330	33	0.062	2.1
ET - 553 - 390	39	0.077	2.0
ET - 553 - 470	47	0.086	1.8
ET - 553 - 560	56	0.110	1.7
ET - 553 - 680	68	0.120	1.5
ET - 553 - 820	82	0.150	1.4
ET - 553 - 101	100	0.175	1.3
ET - 553 - 121	120	0.220	1.1
ET - 553 - 151	150	0.280	1.0
ET - 553 - 181	180	0.290	0.9
ET - 553 - 221	220	0.400	0.8
ET - 553 - 271	270	0.460	0.75
ET - 553 - 331	330	0.510	0.68
ET - 553 - 391	390	0.690	0.65
ET - 553 - 471	470	0.770	0.58
ET - 553 - 561	560	0.910	0.54
ET - 553 - 681	680	1.200	0.48
ET - 553 - 821	820	1.340	0.43
ET - 553 - 102	1000	1.530	0.40

1. Inductance tested at 100kHz, 0.1Vrms, 0Adc.  
Tolerance 1.3 μH~7.5 μH +30% ~ -20% 10 μH~1000 μH ±20%
2. Inductance drop = 25% typ. at rated Isat.
3. ΔT = 45°C rise typ.
4. Operating temperature range -40°C to +85°C.
5. Electrical specifications at 25°C.