

ET-546 SERIES



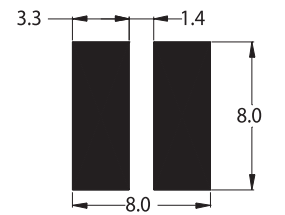
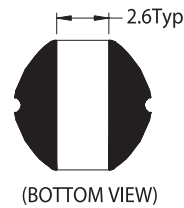
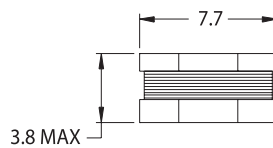
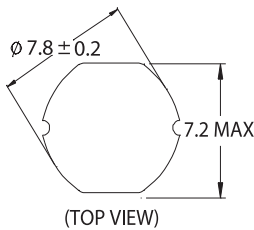
SMD Power Inductors

ET - 546 SERIES



- Low profile—only 7.2 x 7.8 x 3.8 mm (high)
- Low DCR and high current
- Low cost for wide application
- Custom versions available upon request
- Tape & Reel package

Mechanical Dimensions:



RECOMMENDED PCB LAYOUT

UNIT:mm

Part Number	Inductance ¹ (μ H \pm 10%)	DCR (Ω max.)	Isat ² (Adc)
ET - 546 - 100	10	0.080	1.44
ET - 546 - 120	12	0.089	1.39
ET - 546 - 150	15	0.104	1.24
ET - 546 - 180	18	0.111	1.12
ET - 546 - 220	22	0.129	1.07
ET - 546 - 270	27	0.153	0.94
ET - 546 - 330	33	0.170	0.85
ET - 546 - 390	39	0.217	0.74
ET - 546 - 470	47	0.252	0.68
ET - 546 - 560	56	0.282	0.64
ET - 546 - 680	68	0.332	0.59
ET - 546 - 820	82	0.406	0.54
ET - 546 - 101	100	0.481	0.51
ET - 546 - 121	120	0.536	0.49
ET - 546 - 151	150	0.755	0.40
ET - 546 - 181	180	1.022	0.36
ET - 546 - 221	220	1.200	0.31
ET - 546 - 271	270	1.306	0.29
ET - 546 - 331	330	1.495	0.28

1. Inductance tested at 100kHz, 0.1Vrms, 0Adc.
2. Inductance drop = 10% typ. at rated Isat.
3. Δ T = 45°C rise typ.
4. Operating temperature range -40°C to + 85°C.
5. Electrical specifications at 25°C.