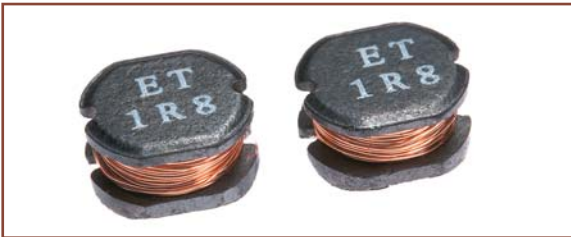


ET-544 SERIES

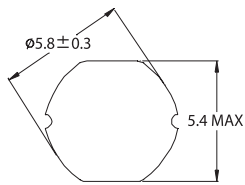


SMD Power Inductors

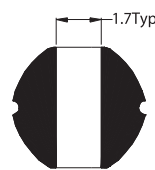
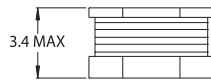


- Designed in very small size, highest performance, and lowest cost
- Very low DCR and high-energy storage
- Low cost for wide application
- Custom versions available upon request
- Tape & Reel package

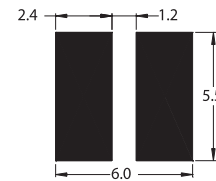
Mechanical Dimensions:



(TOP VIEW)



(BOTTOM VIEW)



RECOMMENDED PCB LAYOUT

UNIT:mm

Part Number	Inductance ¹ (μ H)	DCR (Ω max.)	Isat ² (Adc)
ET - 544 - 1R0	1.00	0.03	4.50
ET - 544 - 1R2	1.20	0.03	4.20
ET - 544 - 1R5	1.50	0.03	4.10
ET - 544 - 1R8	1.80	0.03	3.70
ET - 544 - 2R2	2.20	0.03	3.50
ET - 544 - 2R7	2.70	0.04	3.20
ET - 544 - 3R3	3.30	0.05	2.80
ET - 544 - 3R9	3.90	0.06	2.60
ET - 544 - 4R7	4.70	0.07	2.50
ET - 544 - 5R6	5.60	0.08	2.40
ET - 544 - 6R8	6.80	0.09	2.20
ET - 544 - 8R2	8.20	0.10	2.00
ET - 544 - 100	10.0	0.12	1.80
ET - 544 - 120	12.0	0.13	1.75
ET - 544 - 150	15.0	0.18	1.70
ET - 544 - 180	18.0	0.20	1.60
ET - 544 - 220	22.0	0.22	1.50
ET - 544 - 270	27.0	0.24	1.40
ET - 544 - 330	33.0	0.35	1.10
ET - 544 - 390	39.0	0.40	1.00
ET - 544 - 470	47.0	0.45	0.90
ET - 544 - 560	56.0	0.53	0.85
ET - 544 - 680	68.0	0.65	0.80
ET - 544 - 820	82.0	0.80	0.65
ET - 544 - 101	100.0	0.90	0.60
ET - 544 - 121	120.0	1.20	0.58
ET - 544 - 151	150.0	1.50	0.43
ET - 544 - 181	180.0	1.70	0.41
ET - 544 - 221	220.0	2.05	0.38
ET - 544 - 271	270.0	2.90	0.35
ET - 544 - 331	330.0	3.30	0.28
ET - 544 - 391	390.0	4.00	0.26
ET - 544 - 471	470.0	4.50	0.20
ET - 544 - 561	560.0	5.00	0.19
ET - 544 - 681	680.0	6.20	0.18
ET - 544 - 821	820.0	7.00	0.15
ET - 544 - 102	1000.0	9.00	0.13

1. Inductance tested at 100kHz, 0.1Vrms, 0Adc.
Tolerance 1.0 μ H ~ 8.2 μ H \pm 15% 10.0 μ H ~ 1000.0 μ H \pm 10%
2. Inductance drop = 10% typ. at rated Isat.
3. Δ T = 45°C rise typ.
4. Operating temperature range -40°C to + 85°C.
5. Electrical specifications at 25°C.